



Eustace Gresley Cohen

(RAIA c.1930s)

Eustace Gresley Cohen (1881-1938) was born 20 April 1881 at Kensington in London. Known to his family and friends as 'Eusty', he was educated at Repton College. Cohen gained his initial architectural training when articled to Thomas Lockwood and Sons at Chester, and later worked for Guy Dawber. In 1904, due to ill-health he immigrated to Western Australia with his brother Gilbert; they took up a farm *Beachlands* near Busselton and engaged in farming and horse-breeding. His health restored, Cohen resumed the practice of architecture at Bunbury in 1906, and by 1913 established a partnership with J. Herbert Eales at Perth.

In 1914 Cohen enlisted for service in the First World War, utilising his skills in draftsmanship and engineering to provide significant instruction at military schools. Returning to Perth in 1920 and resuming architectural practice with Eales, Cohen was a major contributor in professional affairs, especially as president of the Royal Institute of Architects of Western Australia during 1924-25. He was the instigator of a prestigious bronze medal for students, continued on after his death as the E.G. Cohen Medal.

Cohen brought the ideals of the Arts and Crafts Movement, prominent in Great Britain in the 1890s, with him to Western Australia. His earliest Australian work included interpretations of the local vernacular homestead in the Arts and Crafts manner. His work was later also influenced by vernacular revivals, for example Kings Park Grandstand in Perth, as well as by the Tudor Revival which inspired his own house at 18 Karoo Street, South Perth. His skill as a designer made him prominent in the ongoing search for an Australian style suited to a predominantly Mediterranean climate.

In the twenty-five year portfolio of the Eales & Cohen partnership 1913-1938, they designed many buildings in the south-west of WA, particularly in the Bunbury-Busselton area. With his initial settlement in the area, many of these works will have been instigated by Cohen. It is likely that Eales generated a good deal of the church work, and Cohen the domestic work of the practice.

With regard to Cohen's regional house designs, a fine example is *Myrniong*, a large Federation Bungalow style residence completed in 1926 at Bunbury, listed on the State Register of Heritage Places. Other examples are 'Walker House' and 'Kaeshagen House' both in Turner Street, Bunbury; 'Chennell House' in Tuart Street and 'Moorlands' in Carey Street, Bunbury; 'Reynolds Homestead', and 'Beachgrove', both in Busselton.

Cohen's partnership with Eales was expanded in 1930 to Eales Cohen & Bennett, and after W.G. Bennett's departure in 1935, from 1937 with J.B. Fitzhardinge as Eales Cohen & Fitzhardinge.

Cohen was well known for his personal proficiency in golf, and also for his contributions to golf architecture around the State. Survived by his widow and three children, he died 20 January 1938 at his home in South Perth, aged 56 years. Eusty's son, also Eustace Gresley Cohen but known as 'Gres', was also a significant architect and a Life Fellow of the RAIA. Gres died in 2008. A grandson is also an architect successful in private practice in WA.

References:

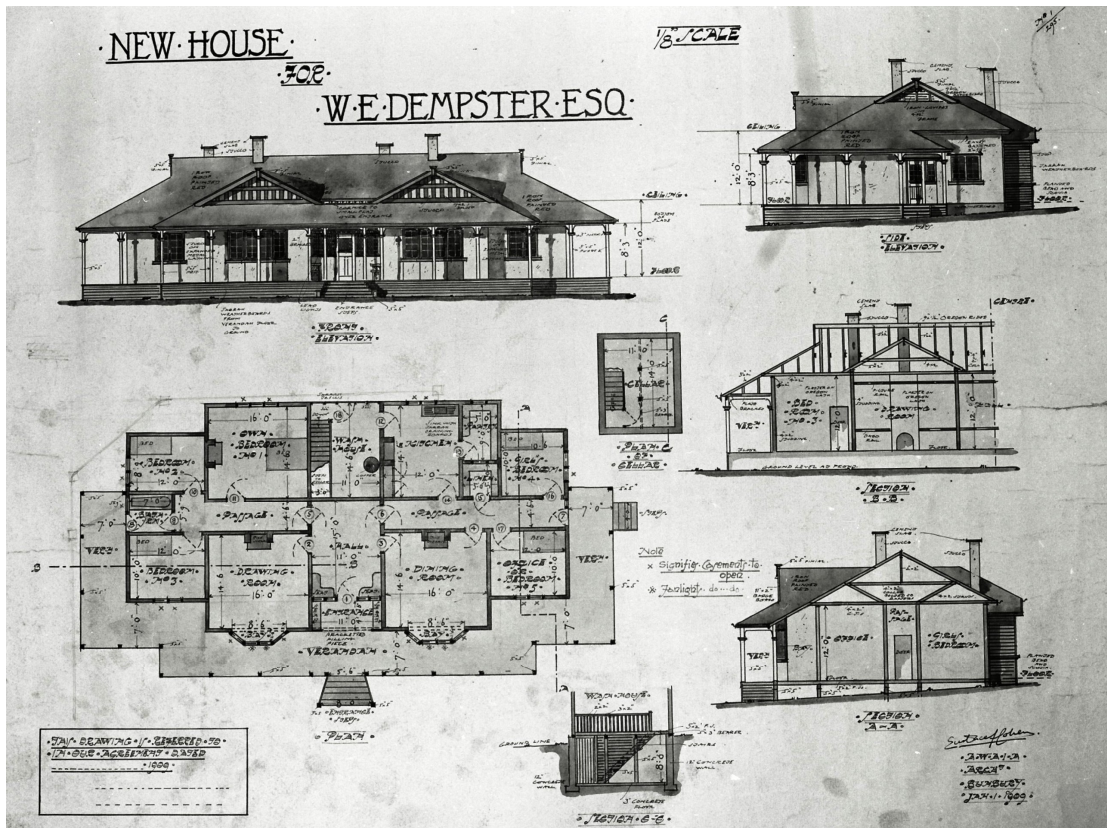
- 'A Broome Memorial', *The West Australian*, 2 June 1921, p.24b (Broome War Memorial).
'Lake Violet Pastoral Co.', *The West Australian*, 28 May 1927, p.8 (homestead near Wiluna).
'Royal Show Ground Improvements', *The West Australian*, 23 June 1928, p.4 (display hall).
'Hand in Glove with Nature", *The Western Mail*, 11 June 1936, p.18 (country golf courses).
'Obituary: The Late Mr Eustace Cohen', *Building and Construction*, 21 January 1938, p.8.
'Perth Architect Mr Eustace Cohen Dead', *The West Australian*, 21 January 1938, p.11.
'A history of golf in Western Australia by Eustace Cohen', by instalments in *The Western Mail*, eg 'eighth instalment by the Late Eustace Cohen' 19 May 1938, p.15.
'Eustace Gresley Cohen 1926-2008', *Architecture Australia*, July- August 2008, p.62.

Contributing author(s): John Taylor

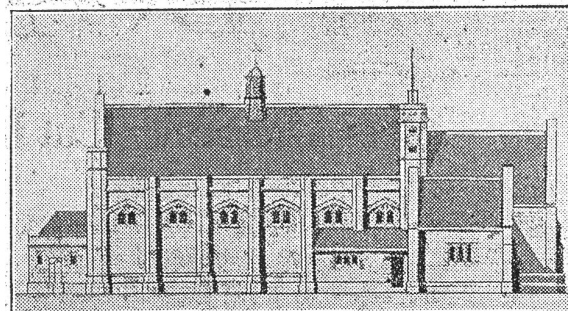
Heritage Committee meeting approval date: 30 August 2012 Last updated: 30 August 2012

Citation details:

Taylor, John J., 'Cohen, Eustace Gresley (1881-1938)', *Western Australian Architect Biographies*, <http://www.architecture.com.au/i-cms?page=13453>, accessed DATE.



Eustace Cohen AWAIA house design for W.E. Dempster dated January 1909 (Muhling Collection). There is a fruit grower Dempster listed at Argyle, south-east of Bunbury, around this time.

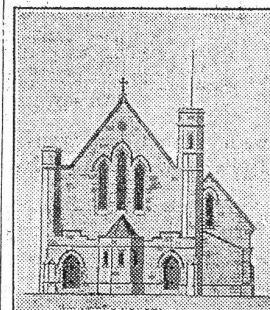


ANGLICAN CATHEDRAL FOR BROOME.

Our illustrations show sketch elevations from the architects' approved design for the Anglican cathedral church, it is proposed to erect at Broome for the North-West Diocese. The plan provides for a nave 70ft. x 30ft., chancel 30ft. x 24ft., morning chapel, vestry, baptistry and porches. A small clock tower is included, which will also accommodate tubular bells. Provision has been made for future extensions. It is intended that the building shall be constructed of concrete blocks, with a tiled roof surmounted by a fleche for ventilation purposes. The floors will be of granolithic and will accommodate over 300 worshippers in chairs.

Special precautions are being taken to ensure the stability of the structure, which will have to withstand the winds of hurricane force which are common to the district. The building is designed in the style of the late perpendicular period of Gothic architecture. It is hoped to make an early start with the erection of the building, and the architects,

Messrs. Eales and Cohen, of Perth, are busy preparing working drawings with this end in view.



Broome War Memorial, unveiled in Bedford Park on New Year's Day 1922. Substantially demolished in the 1990s, remnants are in the Broome Museum (SLWA 231559PD); an unbuilt Anglican Cathedral design for Broome, one of a number of designs for this location (*The West Australian*, 8 September 1924, p.6).



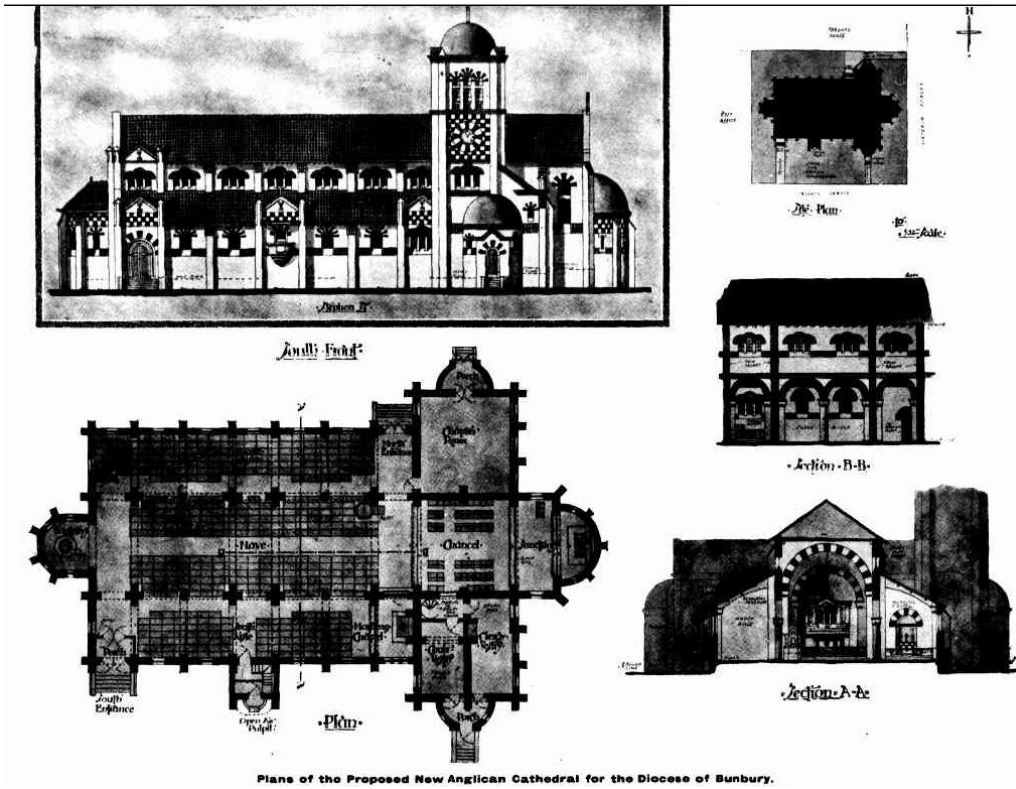
Cohen Residence of 1922 at 18 Karoo Street, South Perth (Google 2012)



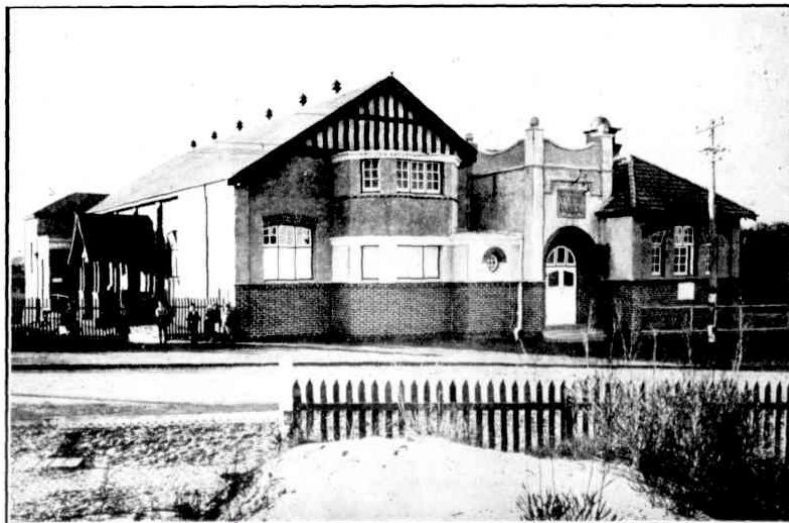
Royal King's Park Tennis Club grandstand of 1925 (HCWA Pic793)



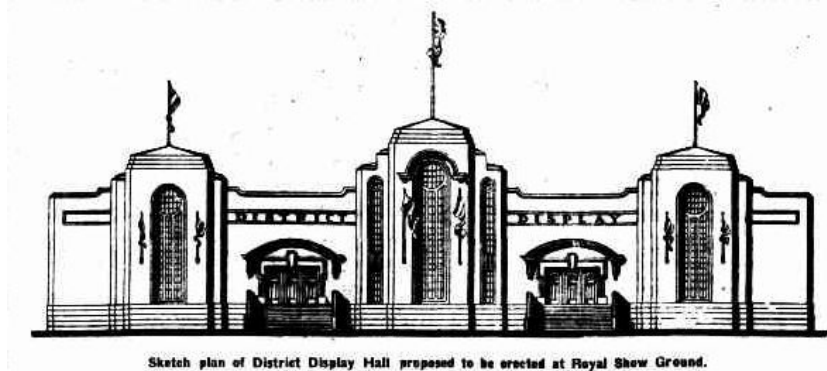
Myrning, completed in 1926 at 50 Beach Road, Bunbury (HCWA Pic28)



Proposed Anglican Cathedral at Bunbury (*The Western Mail*, 26 August 1920, p.7s).



Town Hall, West Guildford, (*The Western Mail*, 10 August 1922, p.5s).



Display Hall, Royal Show Grounds, Claremont (*The West Australian*, 23 June 1928, p.4).